

Shizuoka Cancer Conference 2015

Toward the Next Stage of the Pharma Valley Project

March 5, 2016 (Saturday)

Shizuoka Cancer Center Research Institute

Sponsored by Shizuoka Prefecture and the Shizuoka Cancer Center

Purpose of the Program

The Pharma Valley Project, which has been promoting both disease eradication and industrial development since its launch in 2002, is vaulting into a new chapter with the opening of the new central facility, the Shizuoka Prefecture Health Care Industry Research and Development Center.

The goal of this conference is to promote the study of cancer treatment in Mongolia, reinforce ties of friendship between Mongolia and Japan, focus on the creation of a new cluster model through the use of the new facility, and further develop various projects, all through international exchange.

Ken Yamaguchi, MD, PhD
President, Shizuoka Cancer Center



Program

Shizuoka Cancer Conference 2015 | **March 5, 2016 (Saturday)**
Shiosai Hall, Shizuoka Cancer Center Research Institute
1007 Shimonagakubo, Nagaizumi-cho, Sunto-gun, Shizuoka Prefecture

Theme: **Toward the Next Stage of the Pharma Valley Project**

9:30	Opening Address	Heita Kawakatsu Governor of Shizuoka Prefecture
	Signing Ceremony	Agreement of Cooperation between the Shizuoka Cancer Center and "HOPE" CANCER-FREE MONGOLIA NATIONAL FOUNDATION
	Opening Remarks	Khajidsuren Bolormaa First Lady of Mongolia and Representative of "HOPE" CANCER-FREE MONGOLIA NATIONAL FOUNDATION
10:00	Break (10 min.)	
10:10	Keynote Lecture	Current situation of cancer in Mongolia Dr. Tovuu Lkhagva-Ochir National Cancer Center of Mongolia
10:30	Break (10 min.)	
10:40	Introduction of the Conference	Ken Yamaguchi, MD, PhD President, Shizuoka Cancer Center
11:00	Information Session	Issues Faced and Major Expectations of the Pharma Valley Project Sumihito Okawa Representative, Pharma Valley Support Group Corporate Auditor, ANA Holdings Inc.
12:00	Keynote Lecture	What Is an Innovation Evaluation? Masataka Saburi Director for Evaluation and Inspection, Administrative Evaluation Bureau, Ministry of Internal Affairs and Communications
12:30	Lunch (60 min.)	
	Session I-1	Lectures
13:30	Lecture 1	Product Development Based on Joint Research with the Shizuoka Cancer Center Kazuo Shimura Senior Manager, Medical Systems Business Division, Fujifilm Corporation
13:50	Lecture 2	What Will Local Financial Institutions Contribute to the Pharma Valley Project Seiji Inada President, Mishima Shinkin Bank
14:10	Session I-2	Highlights of Communities in the Eastern Part of the Prefecture: Attracting Business to the Area Masahiro Matsumura Business Development Division, Commerce and Industry Bureau, Economy and Industry Department, Shizuoka Prefecture Numazu, Mishima, Fujinomiya and Susono Cities, Shimizu, Nagaizumi and Oyama Towns, Health-Promoting Onsen in Izu
14:40	Break (15 min.)	
14:55	Session II	Opening the Shizuoka Prefecture Health Care Industry Research and Development Center as a New Core Facility of the Pharma Valley Project Role and Operations of the Shizuoka Prefecture Health Care Industry Research and Development Center Yorihiko Taki Deputy Director, Pharma Valley Center, Shizuoka Industrial Foundation Using the Center (Presentations by Tenants) Chair: Katsunori Ueda Director, Pharma Valley Center, Shizuoka Industrial Foundation Presenters: Fumiaki Inaba Director, Terumo Corporation ME Center Nobuyuki Morita CEO, Tokai Buhin Kogyo Co., Ltd. Tetsuro Ogawa President, Olympus Terumo Biomaterials Corp. Toru Eguchi Head, Sunstar Shizuoka Institute Yoshimasa Fukasawa Representative Director and President, Fukasawa Denko Co., Ltd.
15:55	Closing Address	Ken Yamaguchi, MD, PhD President, Shizuoka Cancer Center
16:00	Tour of the Shizuoka Prefecture Health Care Industry Research and Development Center	

Please note: Lecture topics are subject to change.

Speaker Profiles / Overview of Lectures

Keynote Lecture

Current situation of cancer in Mongolia

Speaker

Tovuu Lkhagva-Ochir National Cancer Center of Mongolia
Chemotherapy Physician



Curriculum Vitae

Education	Undergraduate program, Mongolian National University of Medical Sciences
1997-2003	Cancer Research Training, National Cancer Center of Mongolia
2003-2004	Master's program, Mongolian National University of Medical Sciences
2004-2006	Doctoral program, Tokushima University
2009-2014	Career
2004-2008	Associate Professor, Achi Private Medical University
2008-2009	Researcher, Science & Education Department, National Cancer Center of Mongolia
2014-present	Chemotherapy Physician, National Cancer Center of Mongolia

The National Cancer Center of Mongolia has been providing cancer treatment since it was established in 1961. This center has 13 departments, 11 administrative divisions, and 432 staff that manage cancer surgeries, chemotherapies, radiation treatments, and palliative care. In addition to its specialized cancer treatment services, the center conducts research and trains specialized physicians in this field. It also implements projects related to preliminary screenings.

In Mongolia, the number of cancer patients has been increasing in recent years. In 2015, the number of patients per 100,000 population was 1.7 times higher than the figure in 2005. As many as 70% of the new diagnoses are end-stage conditions, with cancer being the number two cause of death. Liver cancer, stomach cancer, esophageal cancer, lung cancer, and uterine cancer account for 85% of all cancer cases. Liver cancer affected 92.5 of every 100,000 people in 2015, placing Mongolia high in the world rankings for this type of cancer.

To reduce the number of new cancer cases and the rate of cancer-related deaths, efforts must be made to review and revise the insurance system, to introduce technologies that will enable the diagnosis of cancer while still in the early stages, and to cultivate cancer specialists and health care practitioners with expertise in this field.

Information Session

Issues Faced and Major Expectations of the Pharma Valley Project

Speaker

Sumihito Okawa Representative, Pharma Valley Support Group
Corporate Auditor, ANA Holdings Inc.



Curriculum Vitae

1969.7	Joined Japan Development Bank
2004.6	Vice President, Development Bank of Japan
2007.6	President, The Japan Economic Research Institute
2011.6	Audit & Supervisory Board Member All Nippon Airway, Co., Ltd.
2013.4	Audit & Supervisory Board Member ANA Holdings Inc. All Nippon Airway, Co., Ltd.

In the past, a variety of projects have been pursued in Japan, including regional development projects, academia-industry-government partnerships, and industrial hub creation projects. The outcomes have shown a degree of improvement over time, but few have been both sustainable and successful. By contrast, the Pharma Valley Project has produced genuine results since it was launched in FY 2001 and is continuing to expand. I would like to discuss the reasons for this, as compared with other initiatives, as well as the issues involved and the major expectations for the future.

Keynote Lecture

What Is an Innovation Evaluation?

Speaker

Masataka Saburi Director for Evaluation and Inspection, Administrative Evaluation Bureau,
Ministry of Internal Affairs and Communications



Curriculum Vitae

1991.4-2011.10	Comprehensive public administration experience in energy, water, Official Development Assistance (ODA), small business support, food industry promotion, global warming, employment, diplomacy, world economic analysis, IT, flower industry promotion, etc.
2011.10	Associate Professor, Institute of Economic Research, Kyoto University
2014.8	Director for Evaluation and Inspection, Ministry of International Affairs and Communications

"If you can't measure it, you can't improve it." - William Thomson (Lord Kelvin)
Just as telescopes promoted the development of astronomy and microscopes promoted medicine, the discovery of measurement tools has supported the development of science. Likewise the invention of GDP by Simon Kuznets made it possible to measure the impact of economic policy, we can solve a variety of social problems by inventing the new measurement tools. The innovation which creates the future fate of Japan is a kind of golden egg and spoon relay race by cluster members and we can evaluate it by the amount of activities of cluster members.

Session I-1

Lecture 1

Product Development Based on Joint Research with the Shizuoka Cancer Center

Speaker **Kazuo Shimura** Senior Manager, Medical Systems Business Division, Fujifilm Corporation



Curriculum Vitae

1983.4	Joined FUJIFILM Corporation, Miyazaki Technology Development Center
2008.11	Medical Network Center, General Manager
2009.10	IT Solution Business Div., General Manager
2013.4	Medical Systems Business Div. Business Development Group, Senior Manager

Fujifilm, based on comprehensive joint research pursued with the Shizuoka Cancer Center since 2005, collected data from 1,000 lung cancer cases treated at the Shizuoka Cancer Center to develop and release SYNAPSE Case Match, which uses accumulated past diagnostic information, and automatically searches for and displays past cases that are similar to newly acquired diagnostic images.

In 2015, Fujifilm participated in METI's project for the outbound provision of Japanese medical expertise, and has been promoting efforts to advance Japan-grown medical techniques, such as image diagnosis, in ASEAN countries using SYNAPSE at the Shizuoka Cancer Center.

Lecture 2

What Will Local Financial Institutions Contribute to the Pharma Valley Project

Speaker **Seiji Inada** President, Mishima Shinkin Bank



Curriculum Vitae

1968.3	Graduated from Nihon University College of Law
1968.4	Joined Mishima Shinkin Bank
2000.6	Appointed full-time to the Board of Directors at Mishima Shinkin Bank
2007.6	Appointed Chair of the Board of Directors at Mishima Shinkin Bank
2013.11	Appointed Chair of the Mishima Chamber of Commerce and Industry
2014.1	Appointed Chair of the Eastern Shizuoka Sports Industry Promotion Conference
2015.6	Appointed Chair of the Shizuoka Health Care Conference

Mishima Shinkin Bank is working on revitalizing the local economy by supporting community industrial development and efforts to solve the management challenges of local companies in its sales area, which covers the eastern part of Shizuoka Prefecture and the Izu region. Because this region is also the central site of the Pharma Valley Project, promoting partnerships with the Pharma Valley Center is an important way to help revitalize the local economy.

When creating a health care industry cluster, it is desirable to make maximum use of the support functions of local financial institutions to expand the scope of the medical and health care field.

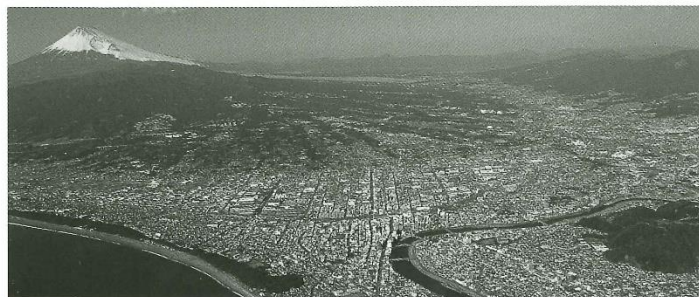
Session I-2

Information Sharing

Highlights of Communities in the Eastern Part of the Prefecture: Attracting Business to the Area

Speaker **Masahiro Matsumura** Business Development Division, Commerce and Industry Bureau, Economy and Industry Department, Shizuoka Prefecture

Numazu, Mishima, Fujinomiya and Susono Cities, Shimizu, Nagaizumi and Oyama Towns, Health-Promoting Onsen in Izu



The eastern part of the Shizuoka Prefecture boasts world-class natural beauty, including the magnificent Mt. Fuji, and enjoys a warm climate. It features picturesque scenery that shows off the changing of the seasons in all their diverse expressions, and is home to numerous historical ruins that played an important role in the course of Japanese history. Proximity to both the ocean and the mountains makes this area a wonderful place both to visit and to live.

Today, with the help of local citizens, I will introduce the proud history, culture, and foods of the eastern region, and highlight its efforts to attract companies, based on the advantages offered by the location.

Speaker Profiles / Overview of Lectures

Session II Opening the Shizuoka Prefecture Health Care Industry Research and Development Center as a New Core Facility of the Pharma Valley Project

Information Sharing

Role and Operations of the Shizuoka Prefecture Health Care Industry Research and Development Center

Speaker **Yorihiko Taki** Deputy Director, Pharma Valley Center, Shizuoka Industrial Foundation



Curriculum Vitae

1979.4	Joined the Shizuoka Prefectural Government
2010.4	Assistant Director, Living Environment Division of the Community and Environmental Affairs Dept.
2012.4	Director of Management Center, Shizuoka Cancer Center
2015.4	Manager, Commerce and Industry Bureau, Economy and Industry Department (stationed at Shizuoka Industrial Foundation)

Shizuoka Prefecture is utilizing the resources with which it has been endowed to promote world-class research and development in the areas of medicine and wellness. It is working to improve the health of prefectural residents, to develop health-related industries, and to promote the Pharma Valley Project to develop this distinctive local community. To further accelerate these efforts, the Shizuoka Prefecture Health Care Industry Research and Development Center, which is being promoted as a new central facility for this project, will partially open on March 1. I will talk about the role this new center is expected to play in open innovation, and discuss its operations.

Presentation 1

Joining the Pharma Valley Project Shizuoka Prefecture Health Care Industry Research and Development Center

Speaker **Fumiaki Inaba** Director, Terumo Corporation ME Center



Curriculum Vitae

1982.4	Joined Terumo Corporation
2009.6	Development Director, R&D Division, Product Development Group and ME Center Development Group
2012.1	Director, ME Center

Terumo Corporation supplies high-quality medical devices and services to patients and medical facilities in more than 160 nations around the world. The ME Center (Medical Electronics Center), an affiliate division of Terumo Corporation, is responsible for the development and manufacture of Terumo's medical electronic devices. On the occasion of moving into the Shizuoka Prefecture Health Care Industry Research and Development Center, the ME Center envisions further growth in our business as well as collaboration with companies having a technological edge/potential in their area of specialty to develop products that could address hitherto unmet needs. Today I will provide an overview of the ME Center, covering those areas where it can provide support for this vital project that encompasses the regional community.

Presentation 2

Expectations of the New Center

Speaker **Nobuyuki Morita** CEO, Tokai Buhin Kogyo Co., Ltd.



Curriculum Vitae

1963.3	Graduated from Nihon University College of Law
1963.4	Joined Tokai Buhin Kogyo Co., Ltd.
1986.2	Named president after sudden death of father, the company's founder
1999.4	Established Micro Parts Business Division
2003.4	Established Titanium Business Division, entered medical field
2010.6	Applied to and successfully had the company named a "Business Supporting Cooperation between Hospital and Private Sectors for the Development and Advancement of Problem-solving Medical Devices" under the theme "Development of Custom-made, Highly Biocompatible Implants to Remedy Biological Incompatibility."
Honors	
2008.11	Shizuoka New Business Encouragement Award from Shizuoka New Business Conference
2011.5	Grand Prize, the 1st Dream Company Awards (Mishima Shinkin Bank's Sanshin 100th Anniversary Business)
2014.3	Ranked among the Top 300 Small Businesses of the Excellent SMEs by the Ministry of Economy, Trade and Industry

Expectations are high for the development of medical institutions, manufacturing facilities, pharmaceutical law, and intellectual property networks centered around the Shizuoka Cancer Center.

As much as 90% of the orthopedic implants used in Japan are imported. Through its networks, Tokai Buhin Kogyo is involved in the development and sales of many products suited to physiological norms in Japan.

Tokai Buhin Kogyo will maintain close connections with the Shizuoka Cancer Center, medical device marketing companies and medical institutions to develop sales outlets and examine strategies for successful implementation. The company also wants to contribute in any way it can to the production goal (¥2 trillion) established in the Pharma Valley Project's Third Strategic Plan.

Presentation 3

Promoting the Development of Innovative Biomaterials and Medical Devices Using the New Pharma Valley Center

Speaker

Tetsuro Ogawa President, Olympus Terumo Biomaterials Corp.



Curriculum Vitae

1979.3	Graduated from Tokyo University of Agriculture and Technology Faculty of Engineering
1979.4	Joined Asahi Optical Co., Ltd. (currently HOYA Technosurgical)
1989.8-1991.2	Granted special leave to work as researcher at Yale University Graduate School
1995.10	Manager, New Ceramics Department R&D Section, Asahi Optical Co., Ltd.
2001.10	Director, New Ceramics Department Development Division, Asahi Optical Co., Ltd.
2007.12	Vice President of R&D, Laboratory Skin Care, Inc.
2010.10	Operating Officer, Olympus Terumo Biomaterials Corp. (R&D and Overseas Business Development)
2011.4	Appointed President, Olympus Terumo Biomaterials Corp.
2011.5-2013.5	Director, The Ceramic Society of Japan; Head, The Ceramic Society of Japan's Division of Ceramics in Medicine, Biology and Biomimetics
2012.9-present	Appointed to Editorial Board of Biotechnology Journal
2013.6-present	Director, Japanese Society for Biomaterials
	Involved in the applied research and commercialization of biomaterials including ceramic artificial bones, collagen composite artificial bones, metallic implants, chromatography separating agents, antibody test reagents, cultured bone, and transdermal DDS carriers.
Honors	Ceramic Society of Japan Award for Achievements in Industrial Ceramic Technology Japanese Association of Inorganic Phosphorus Chemistry Science Award The Chemical Society of Japan Science Award

In April 2007, Olympus Terumo Biomaterials established a new Mishima Facility in the Pharma Valley Nagaizumi Industrial Complex, where it develops and supplies medical devices that use biomaterials, such as artificial bones and artificial skin, for the fields of plastic surgery, dentistry, and traumatic injury. To grow its business even further, the company has decided to establish a presence in the new Pharma Valley Center so it can strengthen its development functions there. By introducing new equipment in a new environment, bolstering development staff, and forming partnerships with other companies, Olympus Terumo Biomaterials is hoping to accelerate the development and practical application of innovative medical devices.

Presentation 4

Use of the Shizuoka Prefecture Health Care Industry Research and Development Center

Speaker

Toru Eguchi Head, Sunstar Shizuoka Institute



Curriculum Vitae

1982.3	Graduated from Azabu University Department of Environmental Health
1982.10	Joined Biochemistry Research Division at Sunstar Inc.
1985.10	Two-year research program, Osaka University School of Engineering, Department of Fermentation Engineering
2007.6	Earned Doctor's degree, Azabu University
2008.10	Part-time Lecturer, Tokyo Institute of Technology Graduate School of Bioscience and Biotechnology
2009.3-present	Head, Sunstar Shizuoka Institute

Since 2006, Sunstar has been working with the Shizuoka Cancer Center and the Shizuoka Prefecture Dental Association to promote joint research projects, interactive research promotion projects, and human resource exchange projects. Its goal has been to establish a health care partnership system for preventing and reducing oral health complications associated with cancer treatment. One of the results of such efforts was the joint development of an oral health care product for cancer patients which was launched in 2009.

However, if one looks at oral health care from the perspective of the patient or medical staff, one finds that there is still a lack of both evidence-based research and products. Sunstar is establishing an operational site at the Shizuoka Prefecture Health Care Industry Research and Development Center where it plans to engage in the development of high-quality products that are immediately useful in clinical settings by collecting the background data needed to support those development efforts. The company is also striving to develop medical products from new perspectives by engaging in exchanges of information with other companies.

Presentation 5

Company Overview and Future Efforts at the New Center

Speaker

Yoshimasa Fukasawa Representative Director and President, Fukasawa Denko Co., Ltd.



Curriculum Vitae

1955	Born in Numazu, Shizuoka Prefecture
1994	Appointed Representative Director and President of Fukasawa Denko Co., Ltd.
2013	Chair, Nagaizumi Dementia Patients' Family Association
2013	Director, Nagaizumi Town Council of Social Welfare
2014	Vice Chair, Nagaizumi Chapter of Numazu Business Association
2014	Vice Chair, Nagaizumi Chamber of Commerce
Honors	Minister of Health, Labour and Welfare's Award for Corporate Excellence in the Hiring of Persons with Disabilities (Corporate Excellence in the Hiring of Persons with Disabilities); Superb Performance by Workers with Disabilities
1993.9	Shizuoka Governor's Award for Promotion of Science and Technology (Achievements in the Promotion of Industrial Technology)
2008.12	Minister of Health, Labour and Welfare's Award for Corporate Excellence in the Hiring of Persons with Disabilities (Superb Performance by Workers with Disabilities)
2009.9	Minister Prize in the Employment Development for Older Persons
2012.10	

Founded in 1962, Fukasawa Denko is a well-established company that just celebrated its 53rd anniversary and is based in Nagaizumi-cho, located at the foot of Mt. Fuji. Its main lines of business include the development, design, manufacturing, and assembly of electronics devices, though it also assembles and repairs analytical equipment. The company's key strength is its ability to use its technological prowess in electronics, cultivated over 53 years, to offer customers an array of products in a wide range of variations and quantities, on demand, in a short time frame. Fukasawa Denko is particularly proud of its highly organized, efficient operations and its efforts to promote the employment of senior citizens and handicapped individuals.

Fukasawa Denko has decided to move into the new development center at Pharma Valley, and has been working toward that end since last year. The company has recently been registered as a manufacturer of medical devices, and plans to start its medical device development efforts in earnest this year.